

Buffalo Roaming



Wireless Network

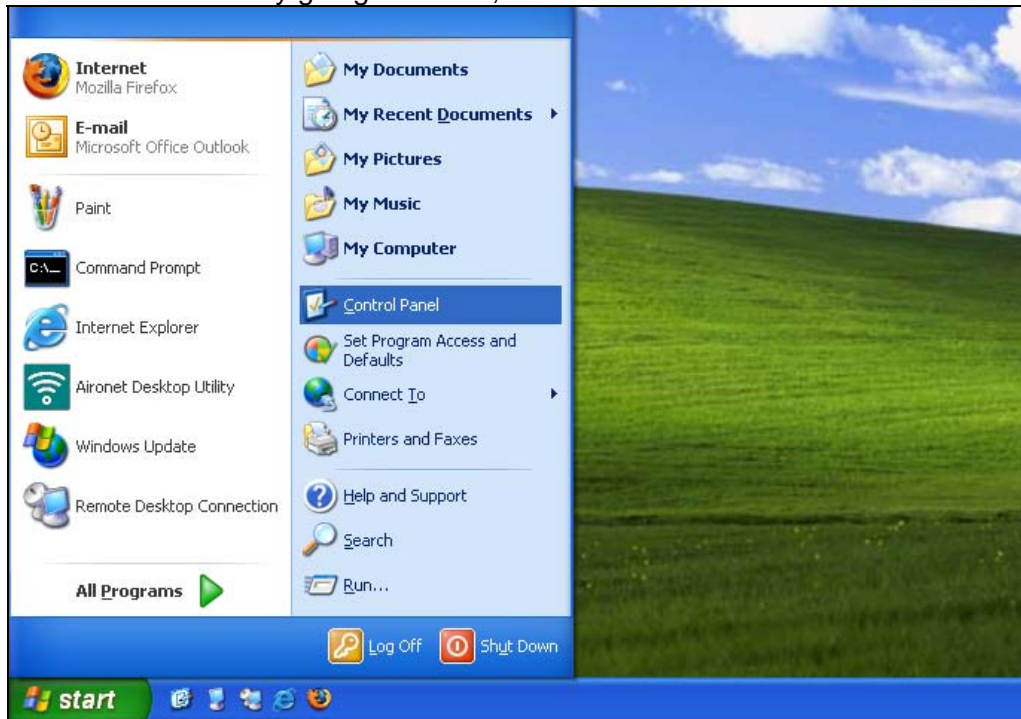
Windows XP Student Access

<http://www.wtamu.edu/buffaloroaming>

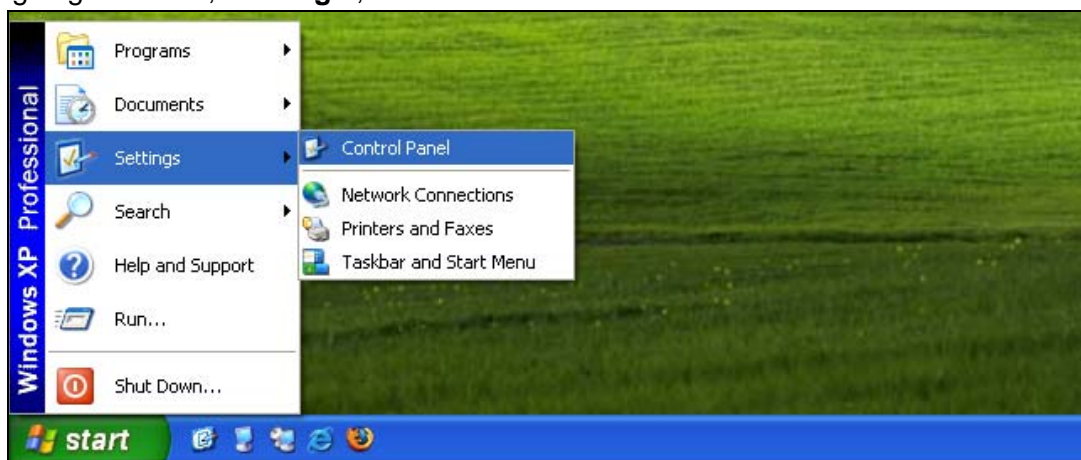
Windows XP Instructions for connecting to Buffalo Roaming with Student Access

***** Please ensure that your Windows Operating System has been fully updated and that you have the latest drivers for your wireless network card. *****

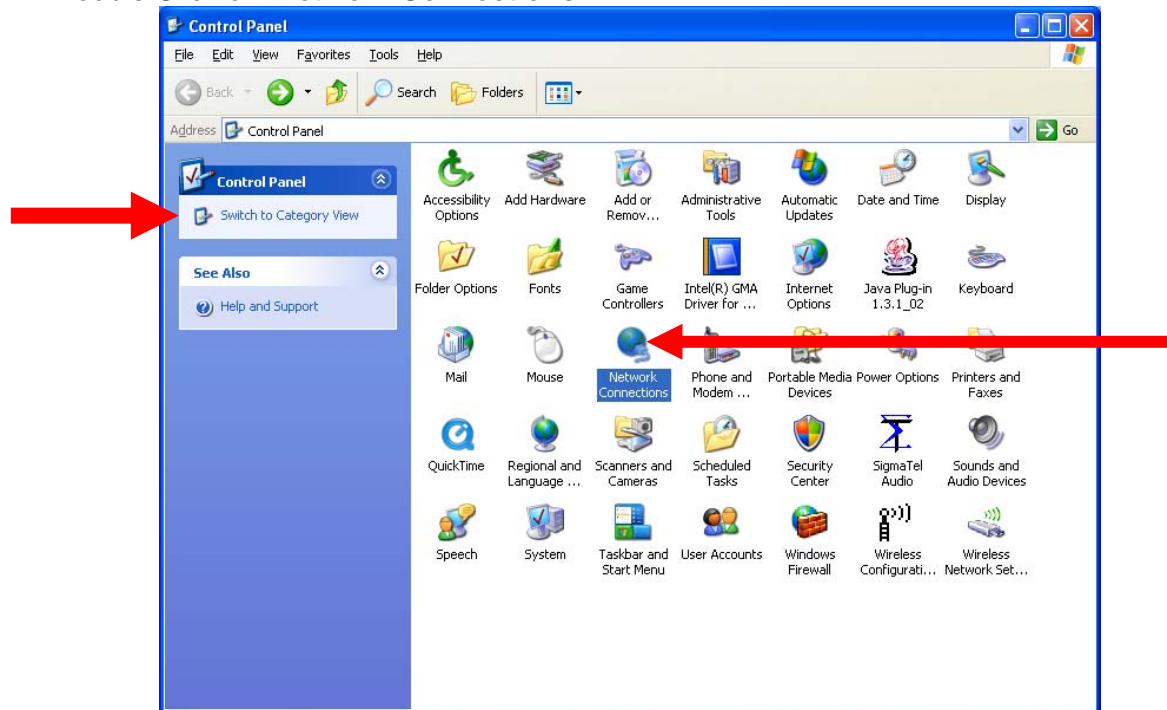
1. Open the Control Panel by going to 'Start', then 'Control Panel'.



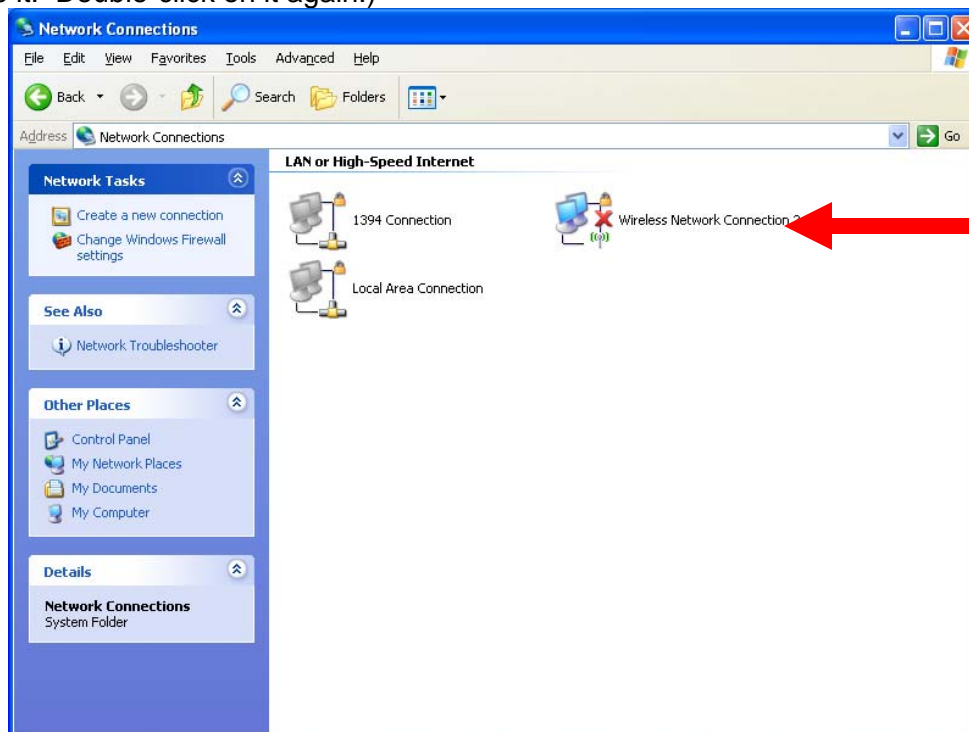
If your Start menu looks like the one below, you can open the Control Panel by going to 'Start', 'Settings', then 'Control Panel'.



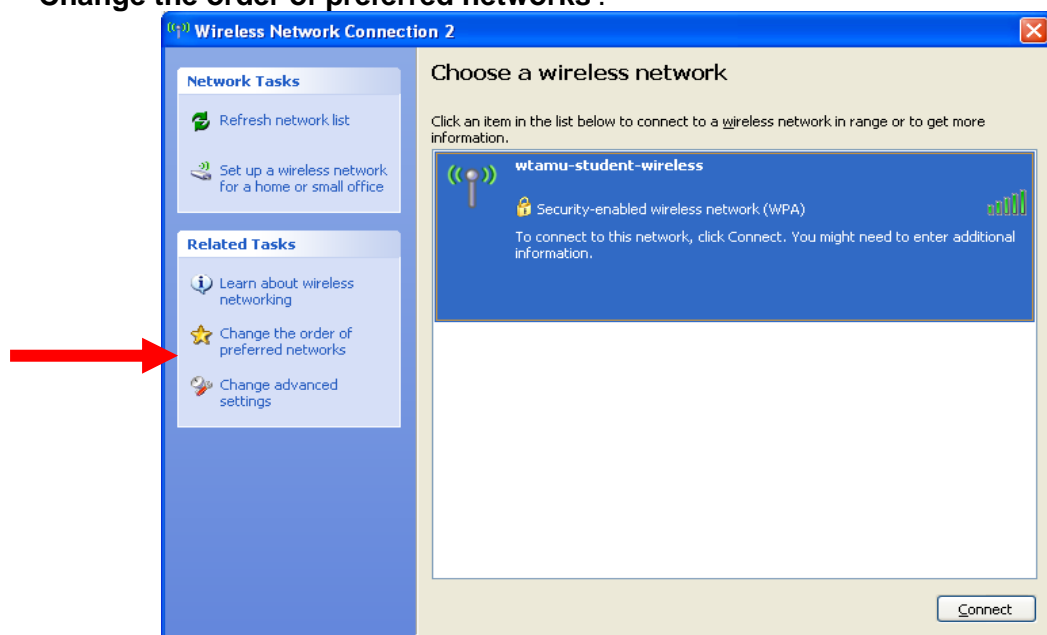
2. If your Control Panel does not look like the one below, click on **'Switch to Classic View'**. Double Click on **'Network Connections'**.



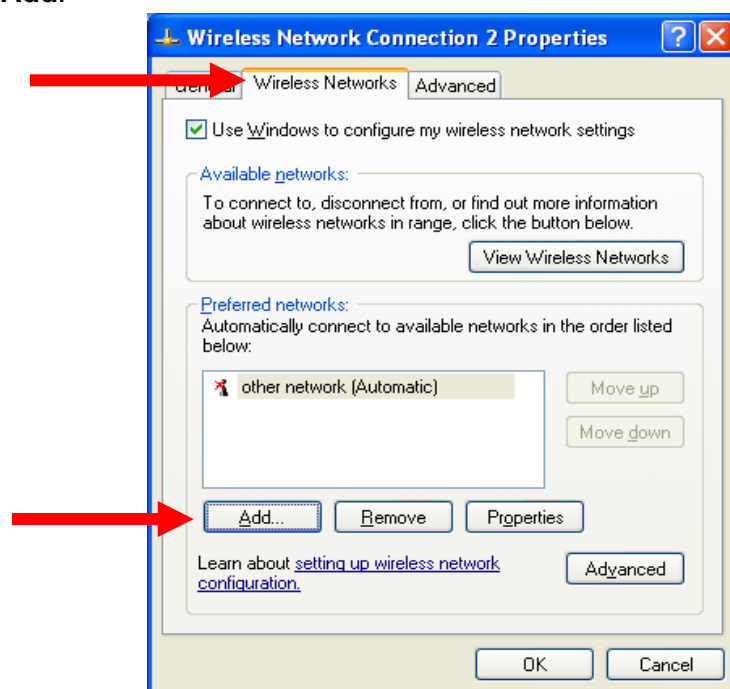
3. Double-click on your wireless network connection. (If the connection was disabled, this will enable it. Double-click on it again.)



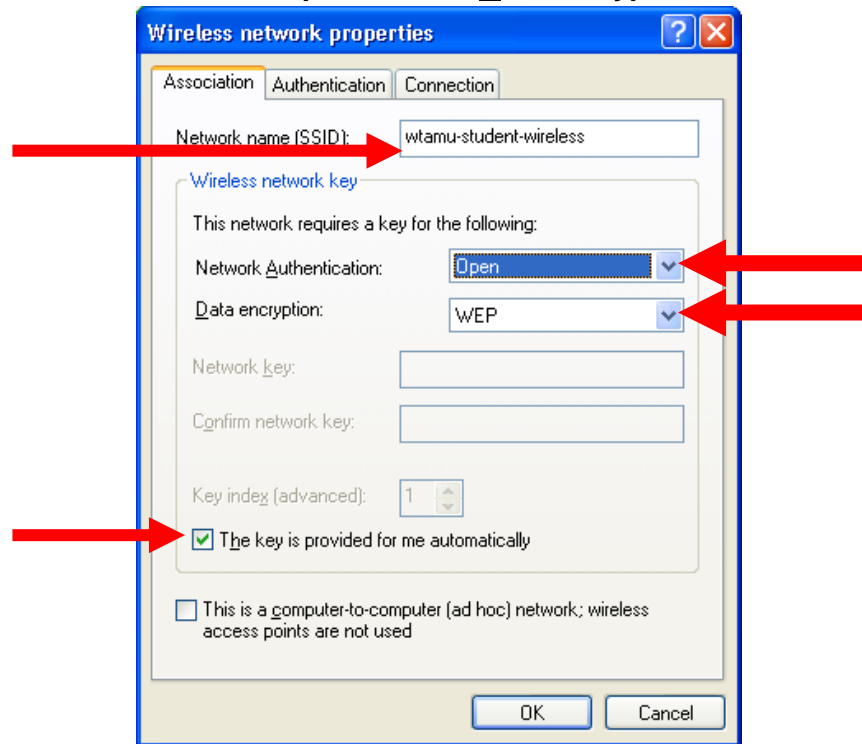
4. You should see 'wtamu-student-wireless' in the list of available wireless networks. If you do not, you may not be in range of the network, or your wireless network card may not be functioning properly. Please make sure your wireless network card is installed correctly and that your **drivers are fully patched and updated**. If you do see the network, click on 'Change the order of preferred networks'.



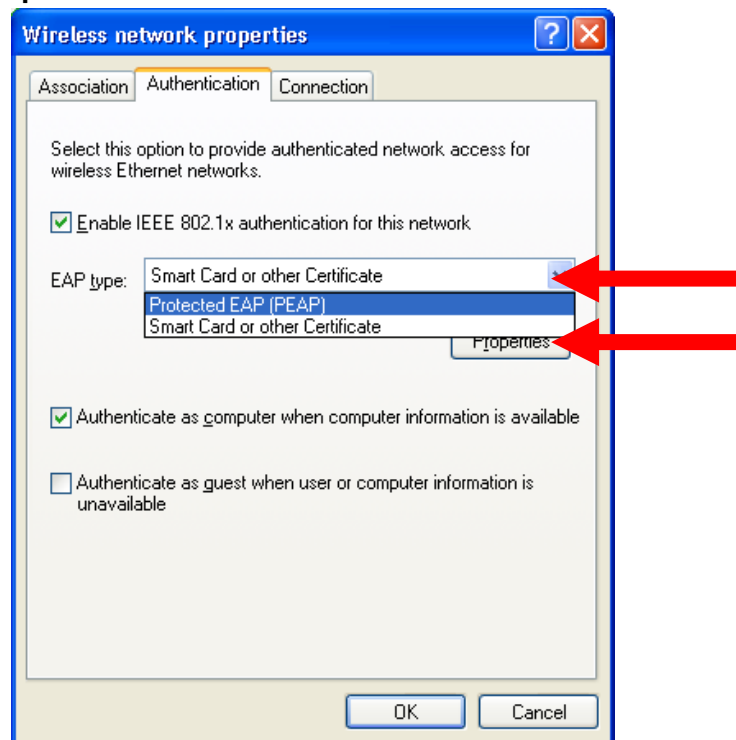
5. Click on the **Wireless Networks** tab. Near the bottom of the window, click on the button called **Add**.



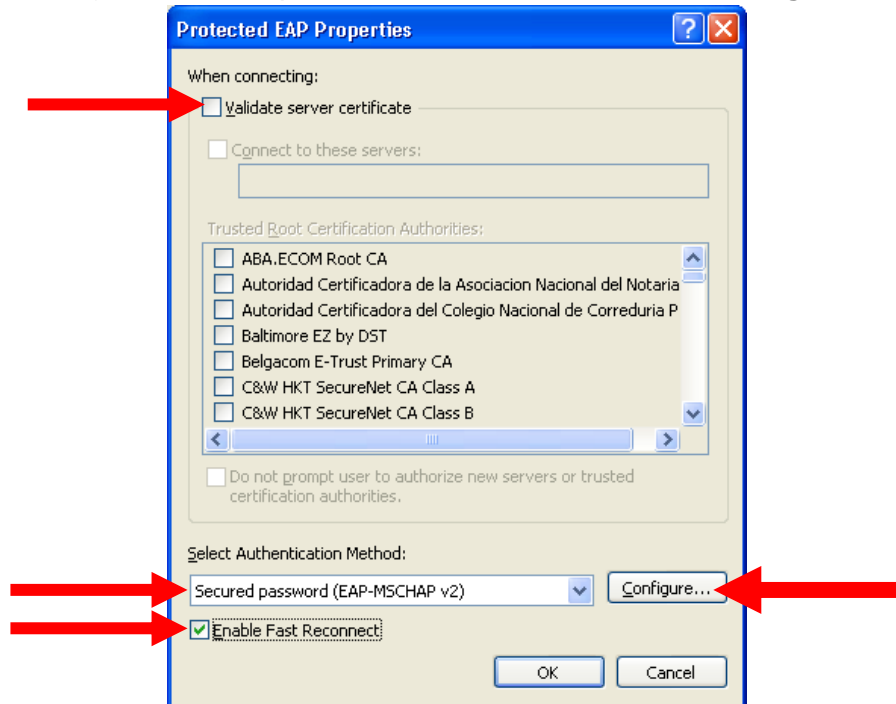
6. In the **Network name (SSID)** field, enter **wtamu-student-wireless**. For the **Network Authentication** field, select **Open**. For the **Data encryption** field, select **WEP**.



7. On the **Authentication** tab, select "Protected EAP (PEAP)" from the drop-down menu, and then click **Properties**.



- Un-check the box next to **Validate server certificate**. Near the bottom of the window, check the box next to **Enable Fast Reconnect**. Select “Secure password (EAP-MSCHAP v2)” from the drop-down menu, and then click the **Configure...** button.



- In the new window, un-check the box next to **Automatically use my Windows login name...** Click **OK**.



- Click '**OK**' to close the Wireless network properties box.

- Click '**OK**' to close the Wireless Network Connection Properties box.

12. After a few seconds, you should be prompted with a box for your User name and password. If you are not prompted with this box, right-click the icon in the System tray (near the clock), and you should see the **Enter Credentials** box appear. Enter the same User name and Password you would use for Buff Advisor, Student Webmail, or WTClass.



13. It may take 15 to 20 seconds for the connection to fully authenticate and connect. Once connected you should see another pop-up window in the taskbar indicating your connection status and signal strength.

If you have any questions about these instructions, contact the ITSC at [ext. 4357](tel:4357) or email them at itsc@mail.wtamu.edu