

Buffalo Roaming

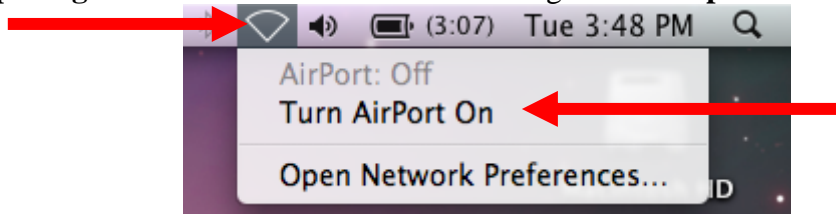


Wireless Network
Macintosh 10.5.X Student Access

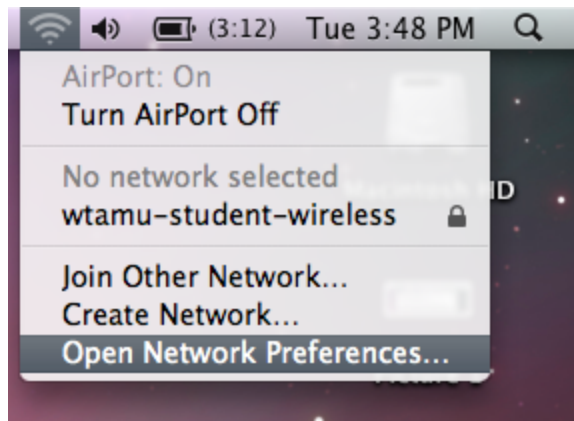
Mac Instructions for connecting to Buffalo Roaming with Student Access

***** Please ensure that your MAC Operating System is at least 10.3 and has been fully updated and that you have the latest drivers for your Airport wireless network card. *****

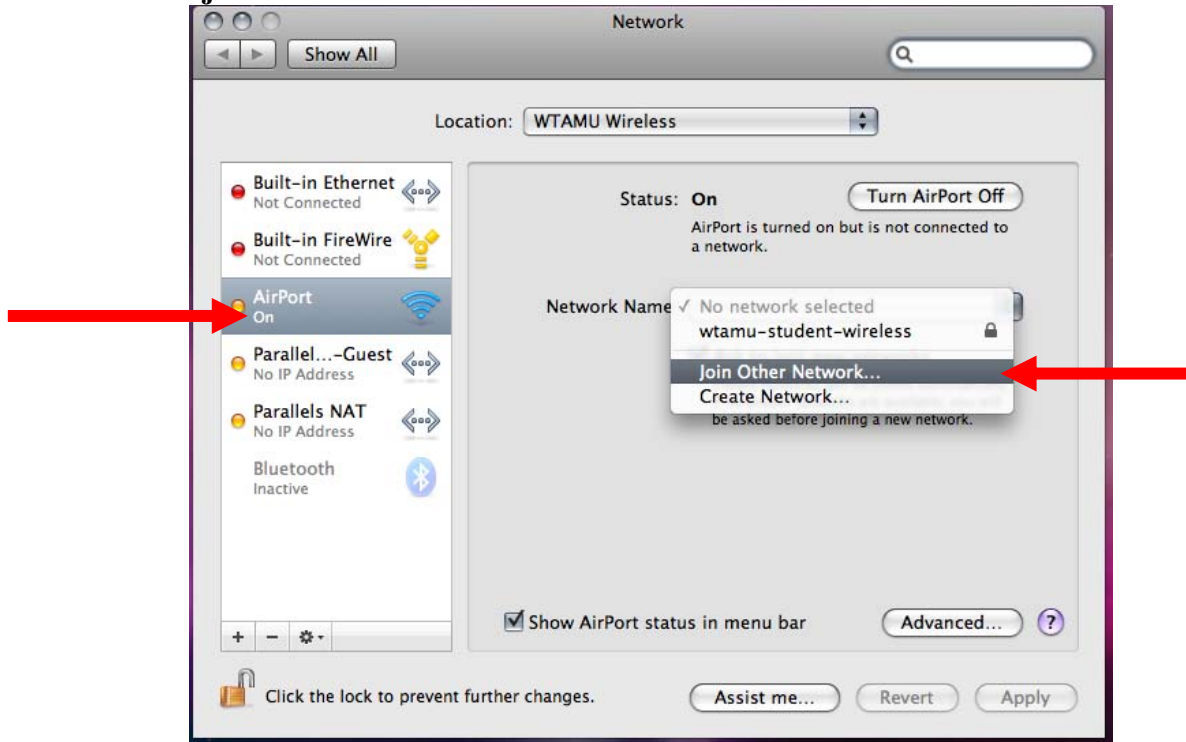
1. If your Airport is not already turned on, do so by clicking on the Airport icon in the **upper right corner** of the screen and selecting **'Turn Airport On'**.



2. Once your Airport is on, click on the Airport icon again and select **'Open Network Preferences...'**



3. In the **Network** pane of System Preferences, ensure that **Airport** is selected on the left side. Click the drop-down next to **Network Name:** that reads **No network selected** and select **join Other Network...**



4. Enter the following information in the respective fields:
- For **Network Name**, enter '**wtamu-student-wireless**' without quotes.
 - For **Security**, select '**802.1X WEP**' from the drop-down menu.
 - **User Name** is your WT User Name (same as Buff Advisor).
 - **Password** is the your WT Password (same as Buff Advisor).
 - For **802.1X**, select **TTLS-PAP** from the drop-down menu.
 - Ensure the box next to **Remember this network** is **Checked**.

Enter the name of the network.

Enter the name of the network you want to join, and then enter the password if necessary. You can also click Show Networks to see a list of available networks.

Network Name: wtamu-student-wireless

Security: 802.1X WEP

User Name: UserName

Password:

802.1X: TTLS - PAP

Remember this network

Show Networks Cancel Join

5. Click **Join**.

You should now be connected to the wireless network. The status of the connection should be shown within the **Network** window. When you close this window, you may be prompted to **'Apply' changes**. Click **Apply**.

You do not have to click on the Disconnect button in order to disconnect from the wireless network. In order to disconnect, all you have to do is turn off the Airport, shut the computer down, or put it to sleep. In addition, you can close out of the Internet Connection application without disconnecting from the network.

If you have any questions about these instructions, contact the ITSC at [ext. 4357](tel:4357) or email them at itsc@mail.wtamu.edu