

Buffalo Roaming

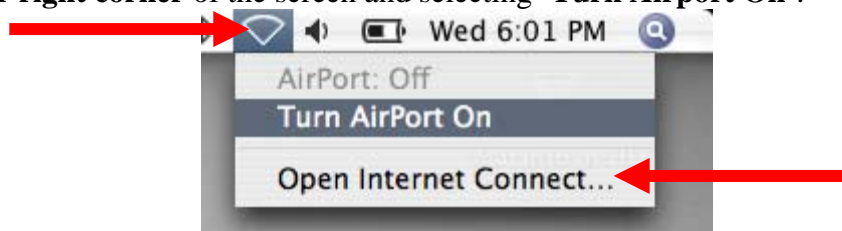


Wireless Network
Macintosh 10.3.9 to 10.4.11 and up Student Access

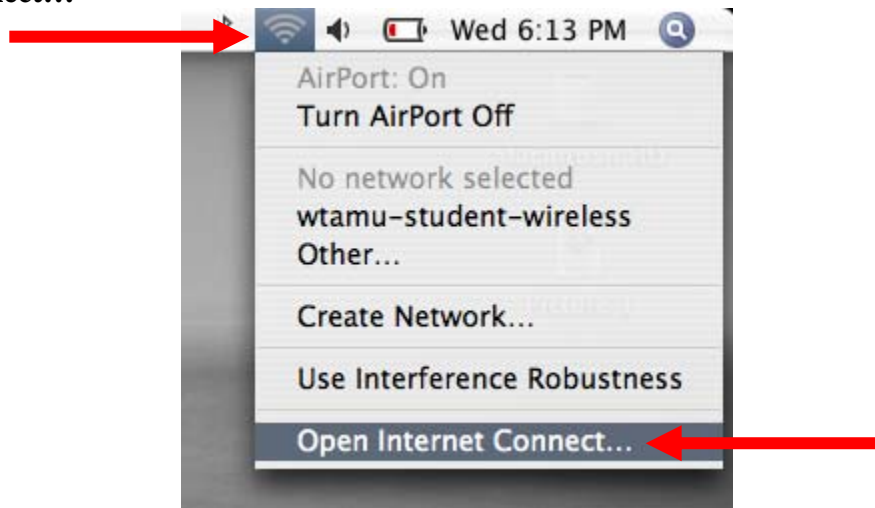
Mac Instructions for connecting to Buffalo Roaming with Student Access

*** Please ensure that your MAC Operating System is at 10.3.9 or 10.4.X and has been fully updated and that you have the latest drivers for your Airport wireless network card. ***

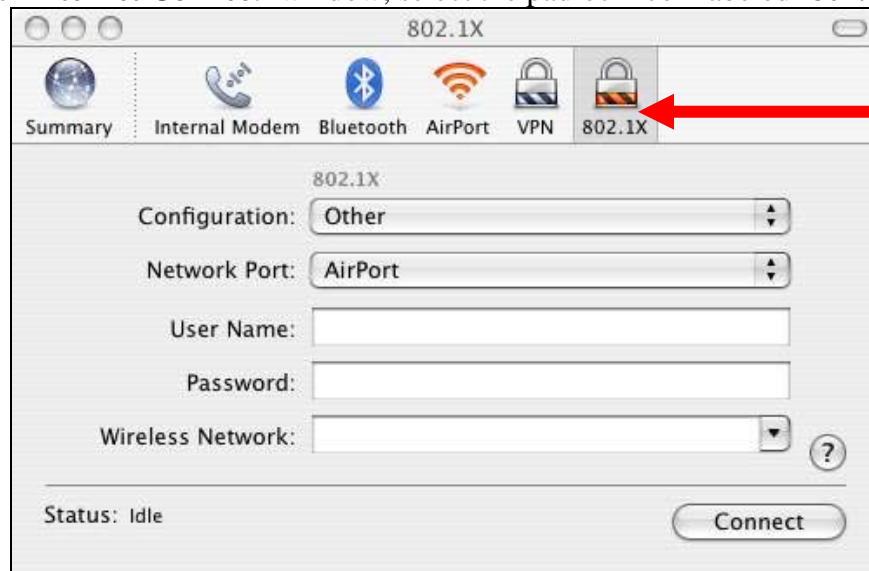
1. If your Airport is not already turned on, do so by clicking on the Airport icon in the upper right corner of the screen and selecting 'Turn Airport On'.



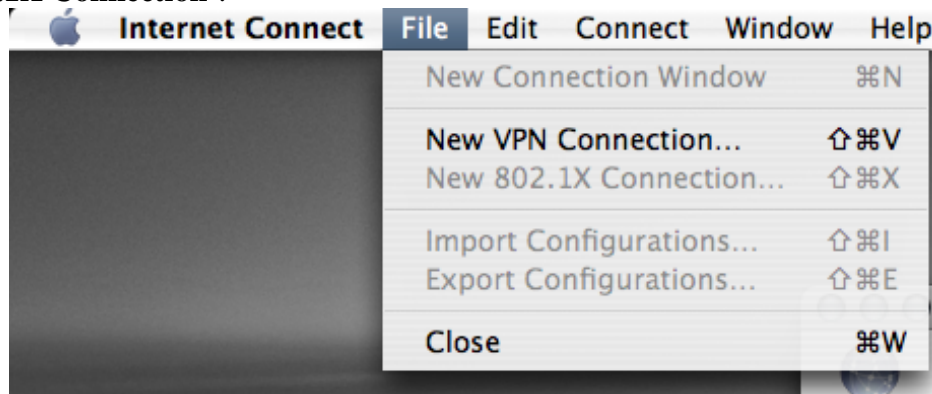
2. Once your Airport is on, click on the Airport icon again and select 'Open Internet Connect...'



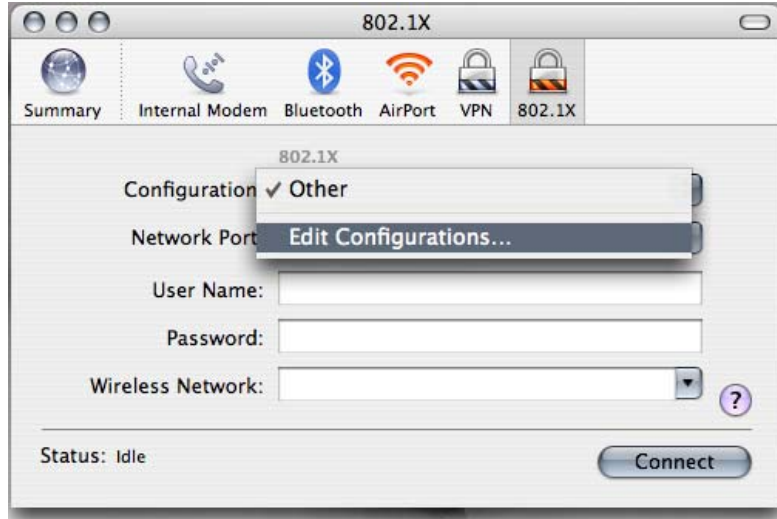
- From the **'Internet Connect'** window, select the padlock icon labeled **'802.1X'**.



If you do not see a padlock icon labeled **'802.1X'**, go to the **'File'** menu and select **'New 802.1X Connection'**.

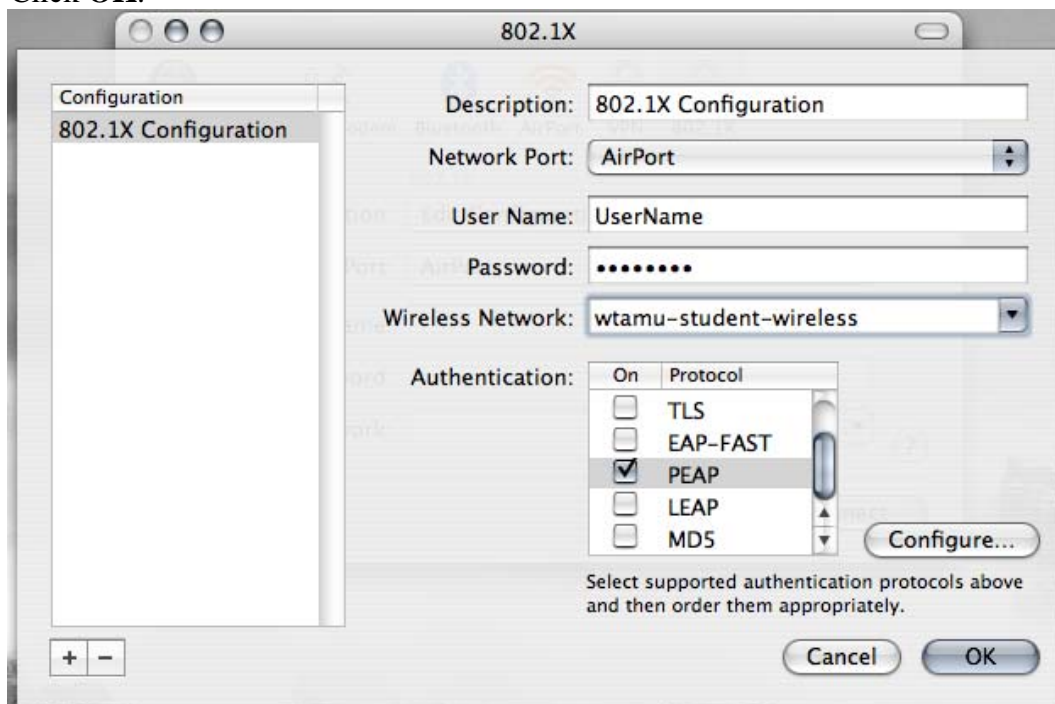


4. Click the drop-down next to **Configuration** that reads ‘**Other**’ and choose “**Edit Configurations...**”

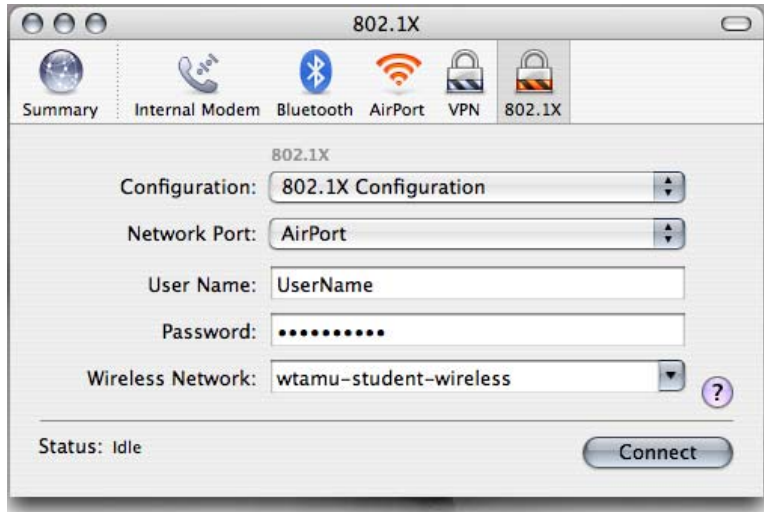


5. Enter the following information in the respective fields:
- **Description** can be anything you like for this setting
 - **Network Port** must be ‘**Airport.**’
 - **User Name** is your WT User Name (same as Buff Advisor).
 - **Password** is the your WT Password (same as Buff Advisor).
 - **Wireless Network** is ‘**wtamu-student-wireless**’ (without the quotes)
 - **PEAP** should be the only protocol checked in the **Authentication** list.

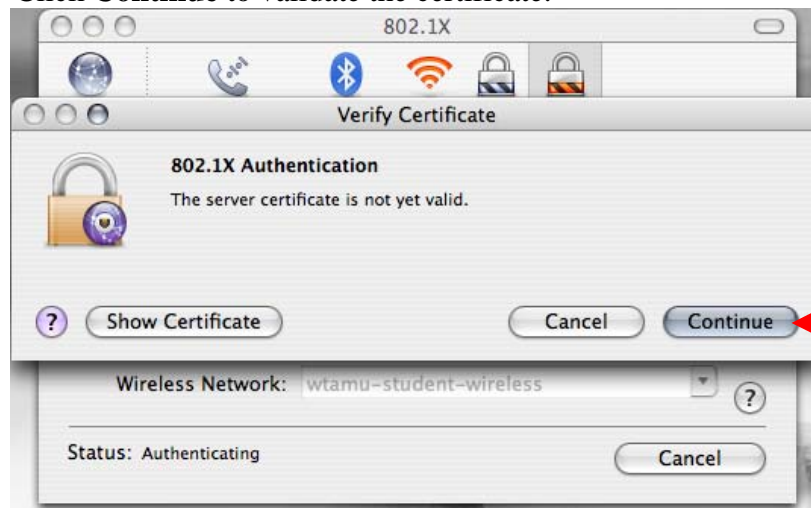
Click **OK**.



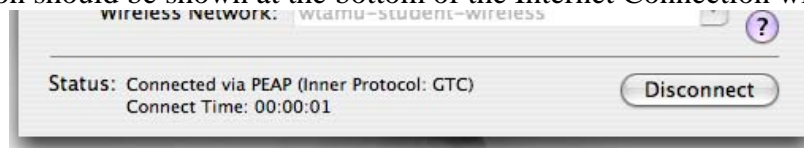
6. The saved configuration should now be populated in the Internet Connection window. Click ‘**Connect.**’



7. It is possible that you will need to validate the server certificate, via the following window. Click **Continue** to validate the certificate.



8. You should now be successfully connected to the wireless network. The status of the connection should be shown at the bottom of the Internet Connection window.



9. You do not have to click on the Disconnect button in order to disconnect from the wireless network. In order to disconnect, all you have to do is turn off the Airport, shut the computer down, or put it to sleep. In addition, you can close out of the Internet Connection application without disconnecting from the network.

If you have any questions about these instructions, contact the ITSC at [ext. 4357](tel:4357) or email them at itsc@mail.wtamu.edu