

# Buffalo Roaming



Wireless Network  
Windows 2000 Guest Access  
3Com Network Card

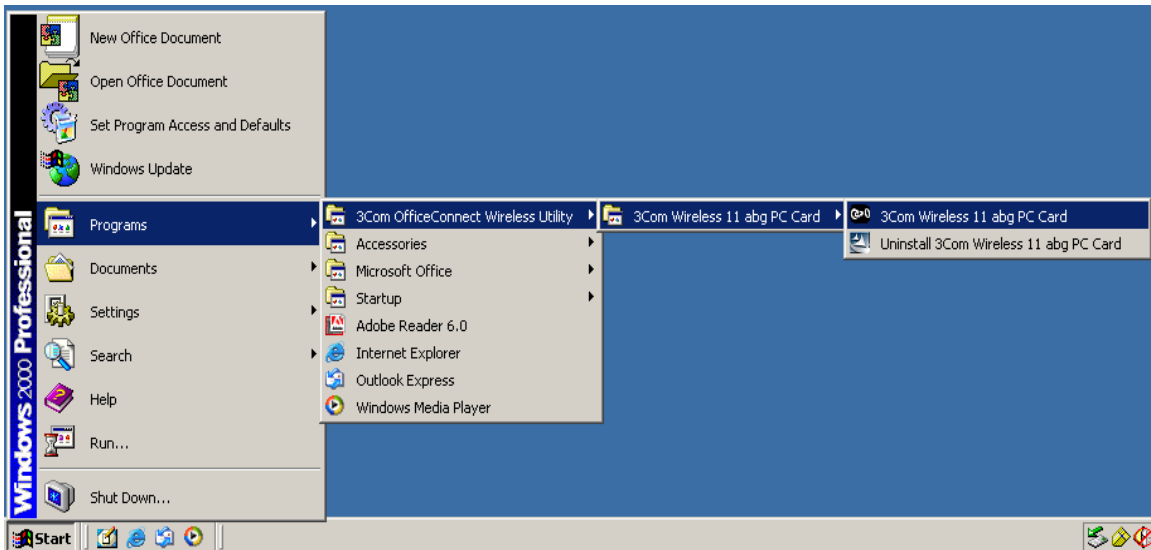
<http://www.wtamu.edu/buffaloroaming>

# Windows 2000 Instructions for connecting to Buffalo Roaming with Guest Access using your 3Com wireless network card.

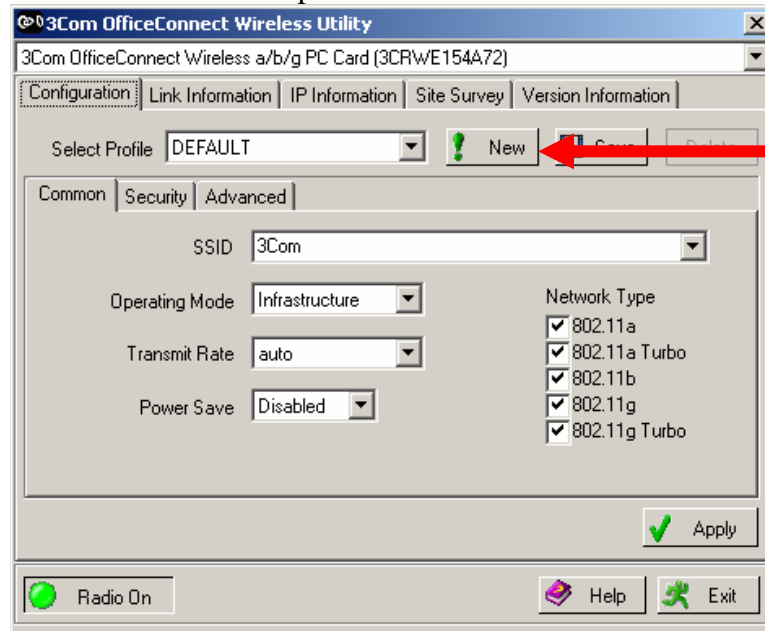
**\*\*\* Please ensure that your Windows Operating System has been fully updated and that you have the latest drivers for your wireless network card. \*\*\***

To gain access to Buffalo Roaming as a guest, you will need to contact one of the following locations to obtain the current Guest access **NETWORK NAME** (SSID): First United Bank Center (FUBC), the Jack B. Kelley Student Center (JBK), the Hastings Electronic Learning Center (HELC), or the Cornette Library

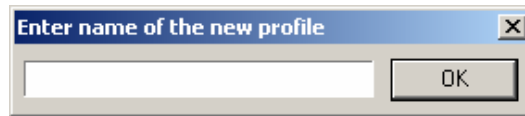
1. Start the 3Com OfficeConnect Wireless Utility program.



2. You will need to create a new profile in order to connect to the **Guest** network. Click on 'New' to create a new profile.

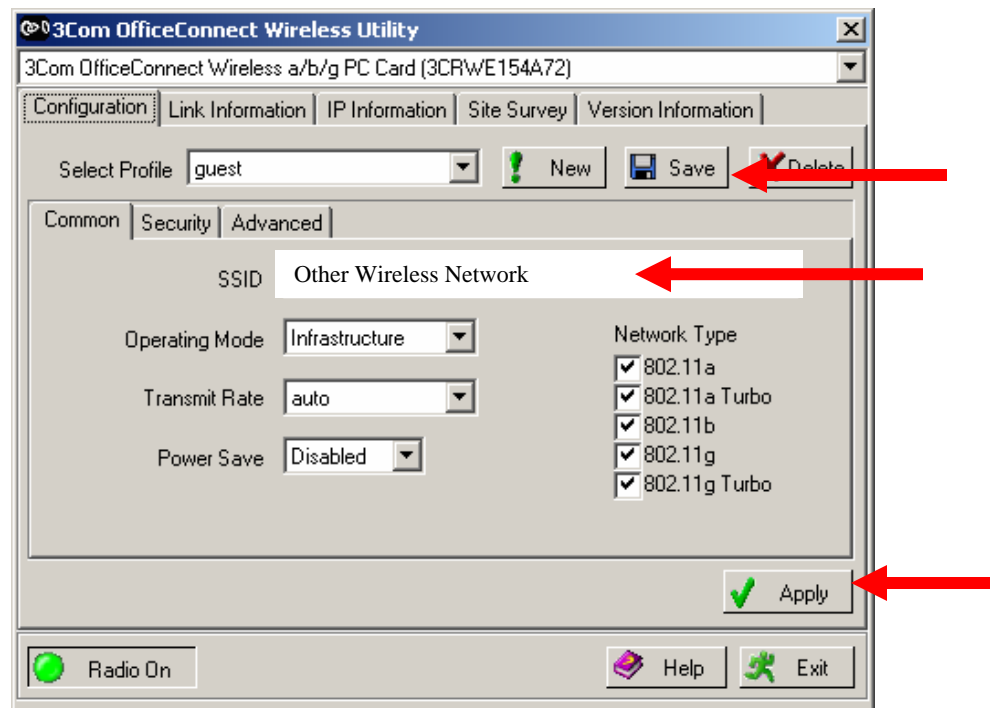


3. You may give the profile any name that you would like. This example will use 'guest' as the profile name. Click 'Ok'.

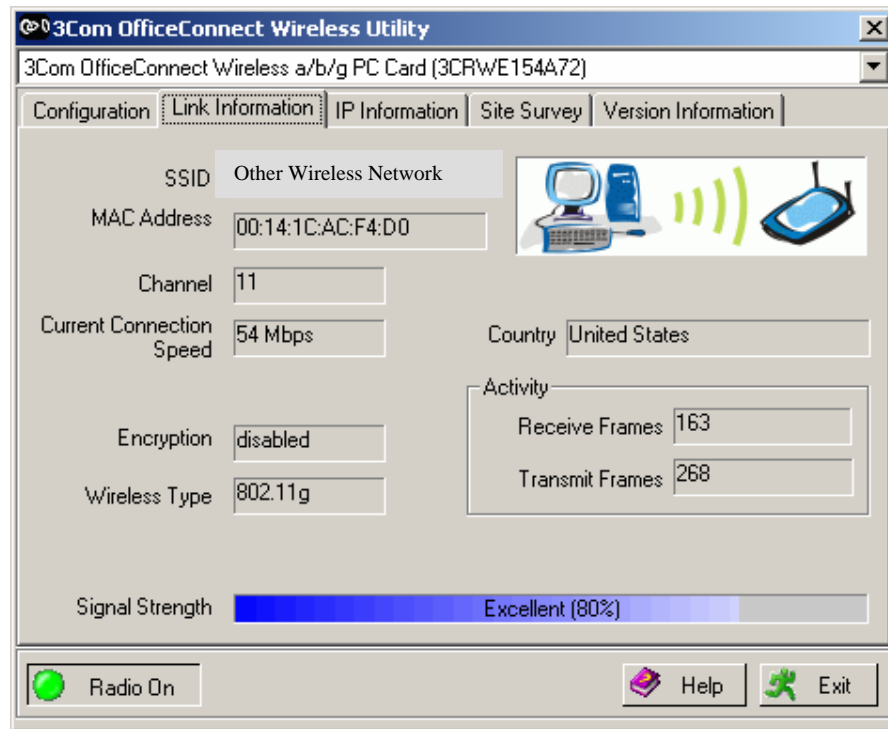


4. Enter the **current name** of the **guest network** in the **SSID** field and click 'Save'.

This example uses 'other wireless network', but that will not be the name of the actual guest wireless network.



5. Now click 'Apply'. This will open the Link Information tab, and after 15 to 20 seconds the connection to the Guest network should be established.



If you have any questions about these instructions, contact the ITSC at [ext. 4357](tel:4357) or email them at [itsc@mail.wtamu.edu](mailto:itsc@mail.wtamu.edu)